

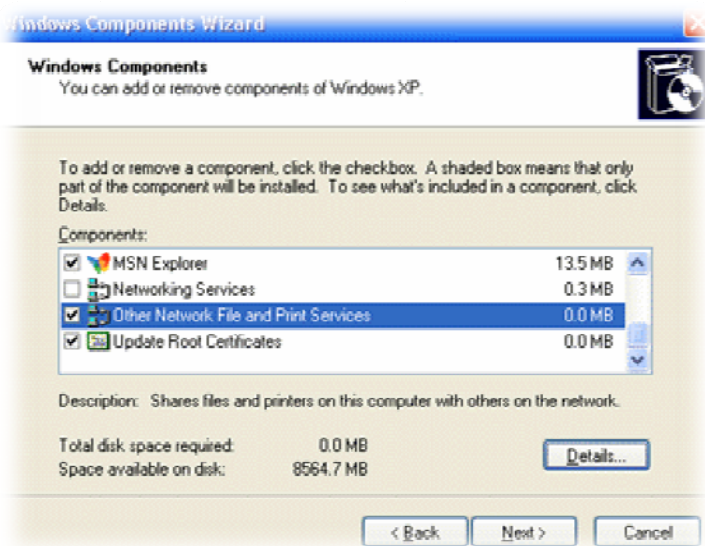
How to Install Print Services for UNIX on Windows XP

This article explains how to install Print Services for UNIX and configure a Line Printer Remote (LPR) printer.

If your network has both Windows 2000 Server print servers as well as UNIX print servers, computers running Windows XP Professional may need to be able to print to either environment. To accomplish this goal you need to configure Print Services for UNIX as well as Microsoft Windows printing.

To install Print Services for UNIX:

1. Click Start, and then click Control Panel.
2. In Control Panel, click Add or Remove Programs.
3. Click Add/Remove Windows Components.
4. In the Windows Components Wizard, click Other Network File and Print Services, and then click Details, as shown in figure below.



5. Select Print Services for UNIX, and then click OK.
6. Click Next, and then click Finish.

Note:

You may be prompted for the Windows XP Professional CD to complete the installation.

Configuring the LPR Port

The Line Printer Remote (LPR) port is best suited to servers that need to communicate with host computers such as UNIX or VAX computers.

To configure an LPR printer:

1. In Control Panel, click Printers and Other Hardware, and then click Printers and Faxes.
2. Under Printer Tasks, click Add a printer to open the Add Printer Wizard, and then click Next.
3. Click Local printer or stand-alone network printer, clear the automatically detect and install my Plug and Play printer check box, and then click Next.
4. Click Create a new port, and then click LPR Port.
5. If LPR Port is not available, click Cancel to stop the wizard. To add the LPR port, you need to install the optional networking component, Print Services for UNIX, as explained earlier in this article.
6. Click Next, and then provide the following information:

In Name or address of server providing LPD, type the Domain Name System (DNS) name or Internet Protocol (IP) address of the host for the printer you are adding. The host may be the direct-connect TCP/IP printing device or the UNIX computer to which the printing device is connected. The DNS name can be the name specified for the host in the Hosts file.

In Name of printer or print queue on that server, type the name of the printer as it is identified by the host, which is either the direct-connect printer itself or the UNIX computer.

7. Click finish button on the screen to finish installing the TCP/IP printer.